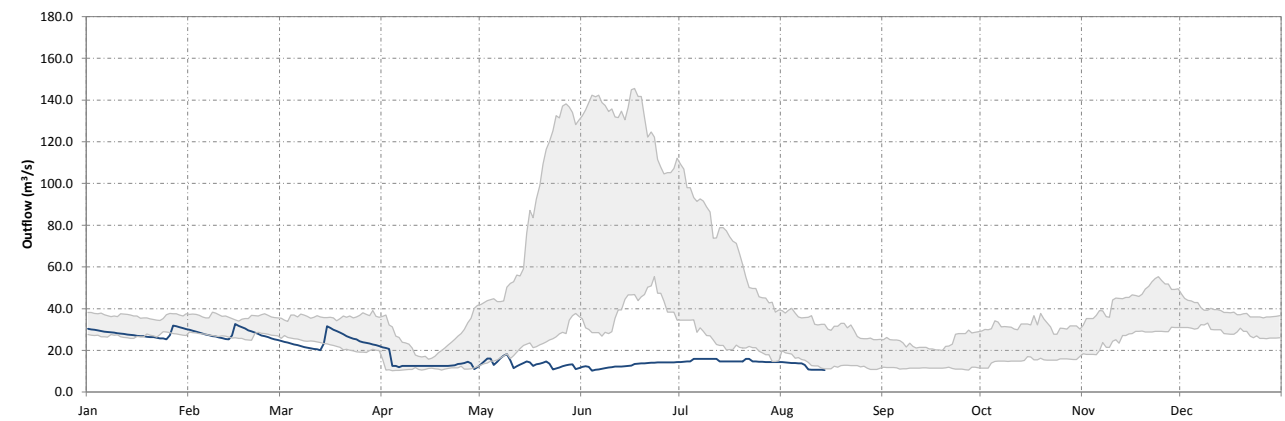
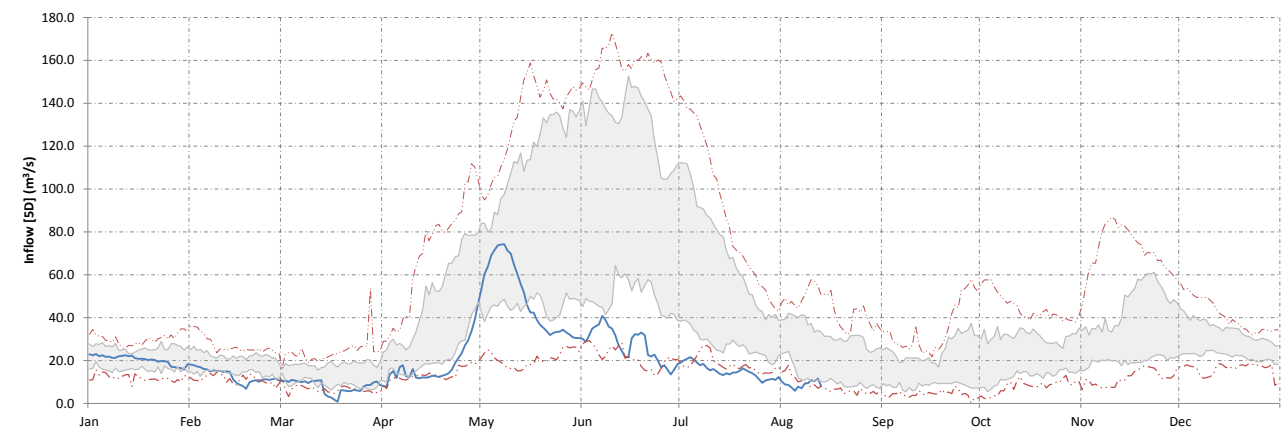
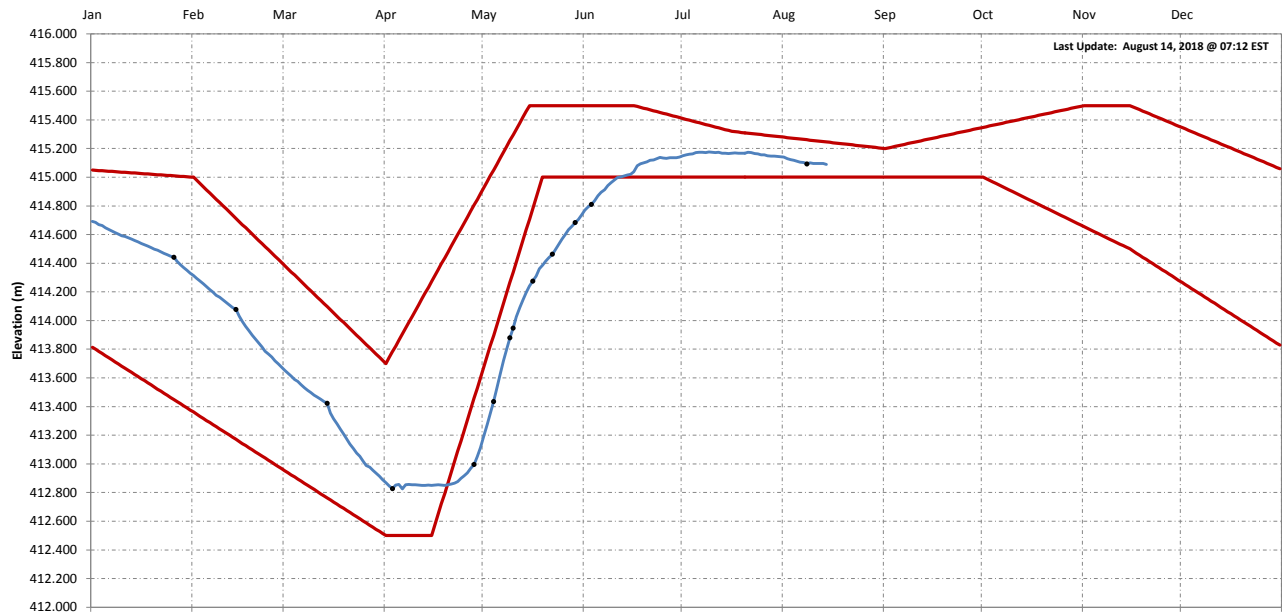


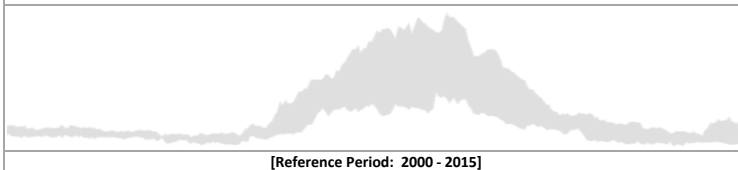


### Raft Lake Dam

— Upper Operating Curve   
 — Lower Operating Curve   
 — Elevation   
 • Log Op   
 - - - UOC (Temp)   
 - - - UOC (Removed Temporarily)



#### 25<sup>th</sup> to 75<sup>th</sup> Percentile Data



[Reference Period: 2000 - 2015]

Date	Elevation (m)	Inflow [5D] (m <sup>3</sup> /s)	Outflow [1D] (m <sup>3</sup> /s)
7-Aug-18	415.103	7.1	13.8
8-Aug-18	415.093	9.4	13.0
9-Aug-18	415.100	9.4	10.8
10-Aug-18	415.096	10.8	10.7
11-Aug-18	415.097	10.4	10.7
12-Aug-18	415.097	11.6	10.7
13-Aug-18	415.095	8.2	10.7

Provisional Data