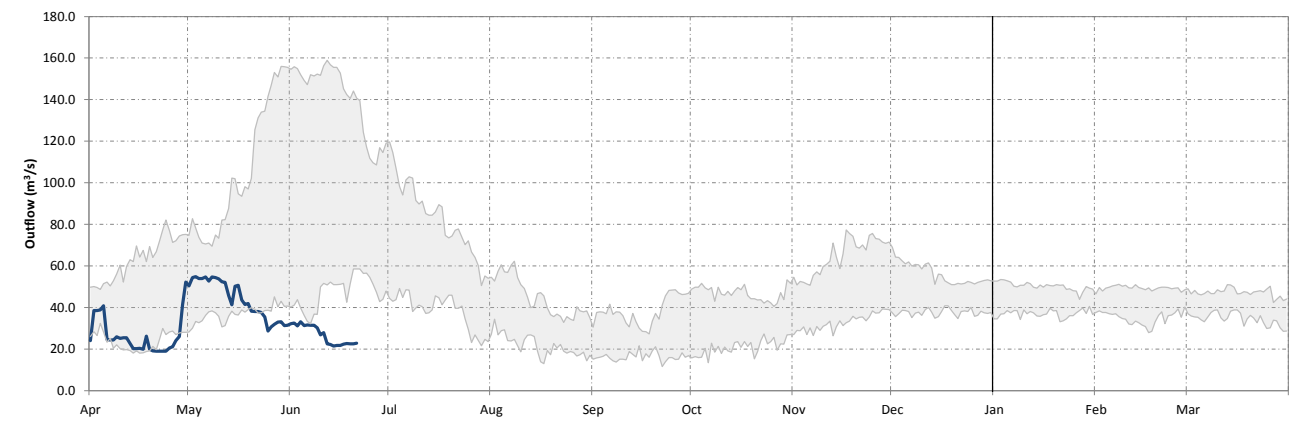
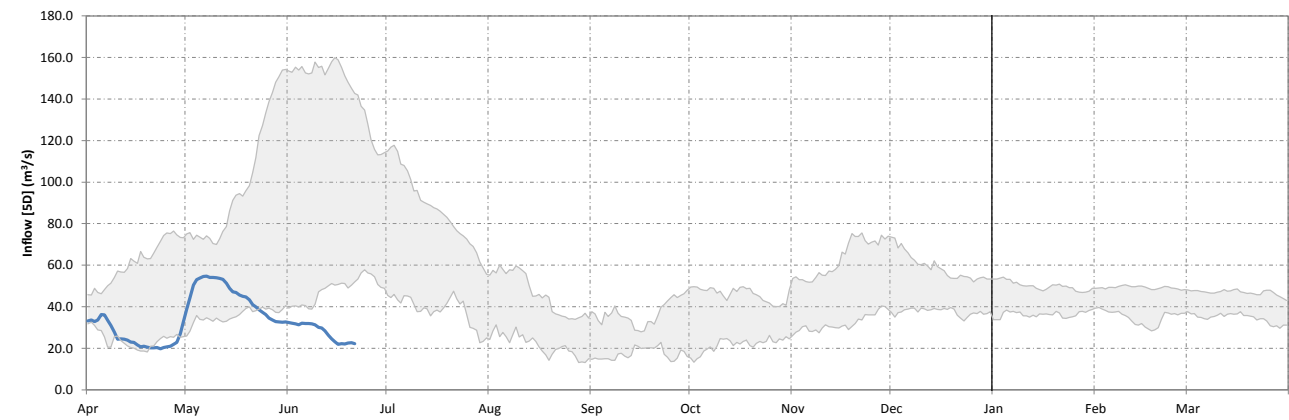
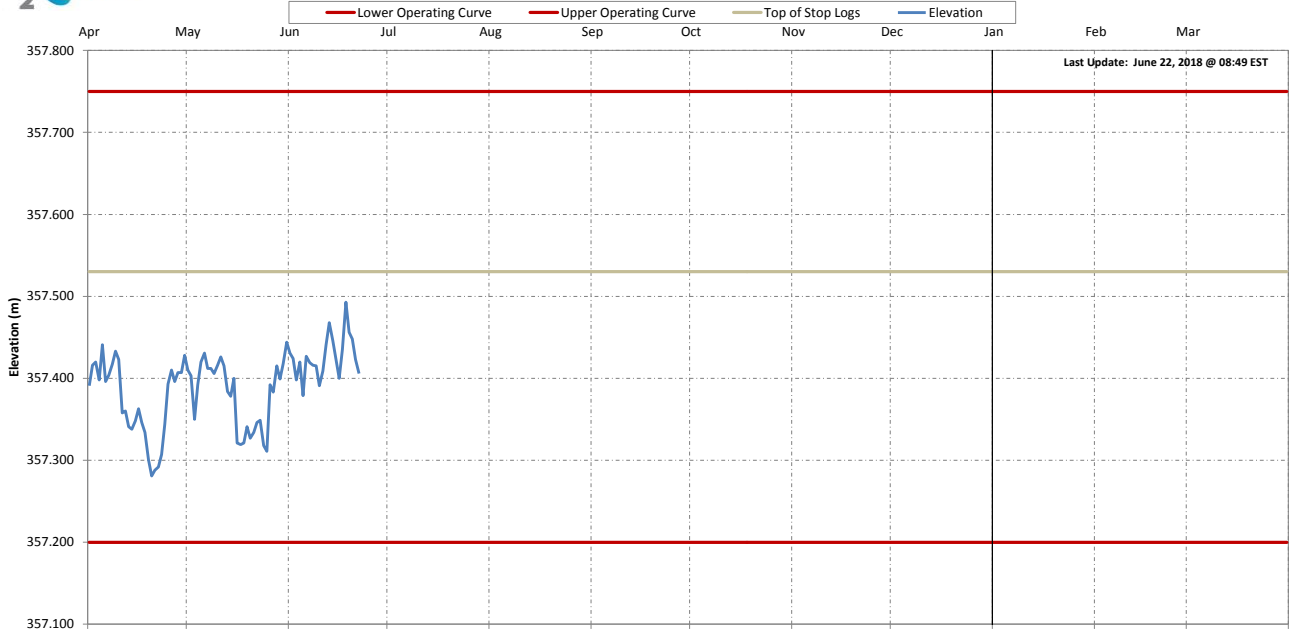
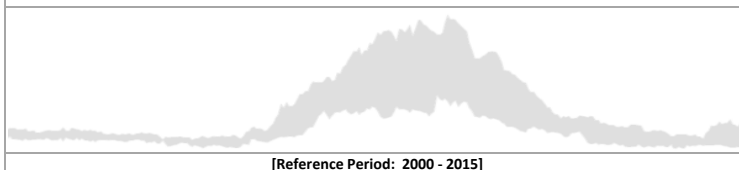




Sturgeon Falls Generating Station



25th to 75th Percentile Data



[Reference Period: 2000 - 2015]

Date	Elevation (m)	Inflow [5D] (m ³ /s)	Outflow [1D] (m ³ /s)
15-Jun-18	357.423	23.1	21.8
16-Jun-18	357.400	21.9	21.8
17-Jun-18	357.435	22.2	22.4
18-Jun-18	357.493	22.1	22.6
19-Jun-18	357.456	22.5	22.5
20-Jun-18	357.448	22.6	22.5
21-Jun-18	357.423	22.2	22.8

Provisional Data