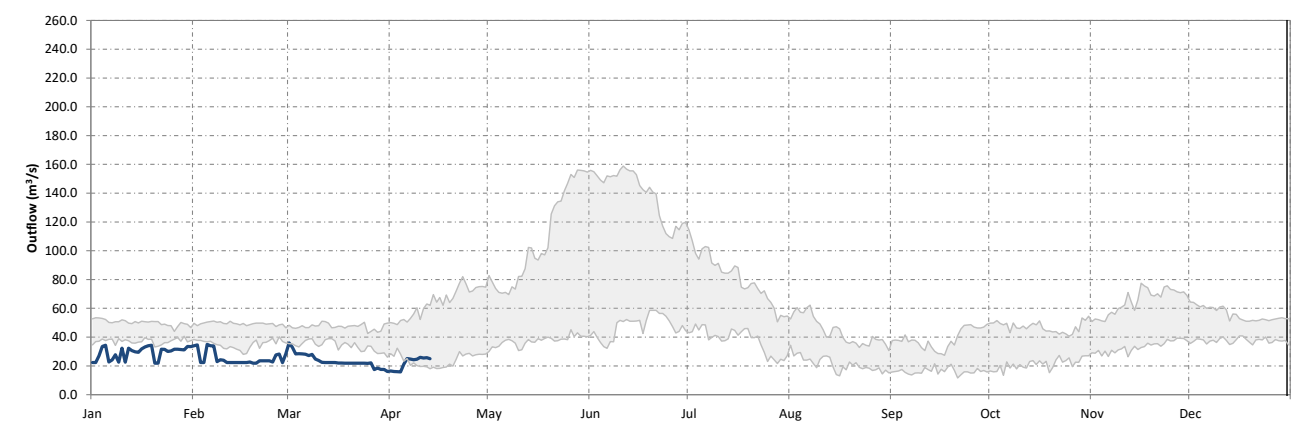
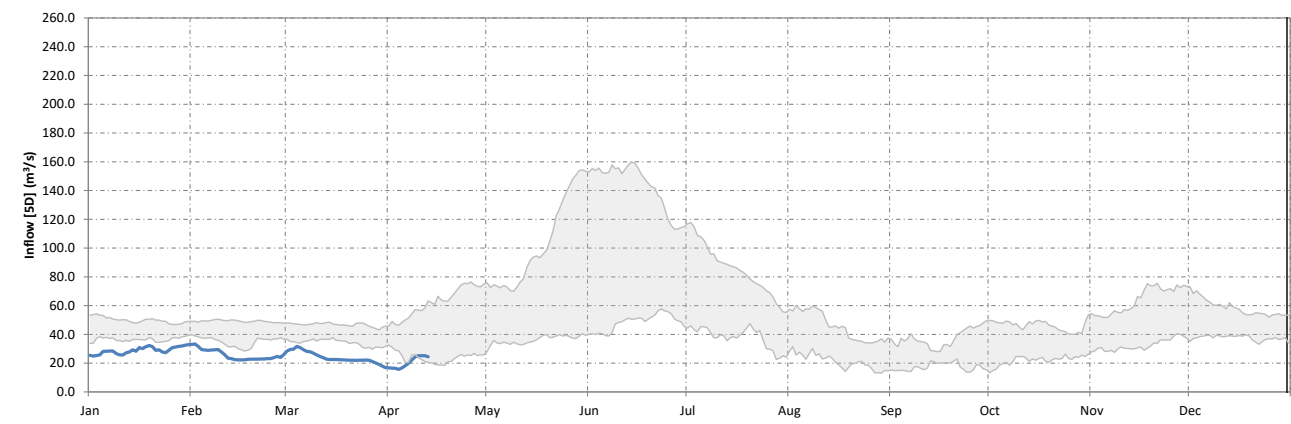
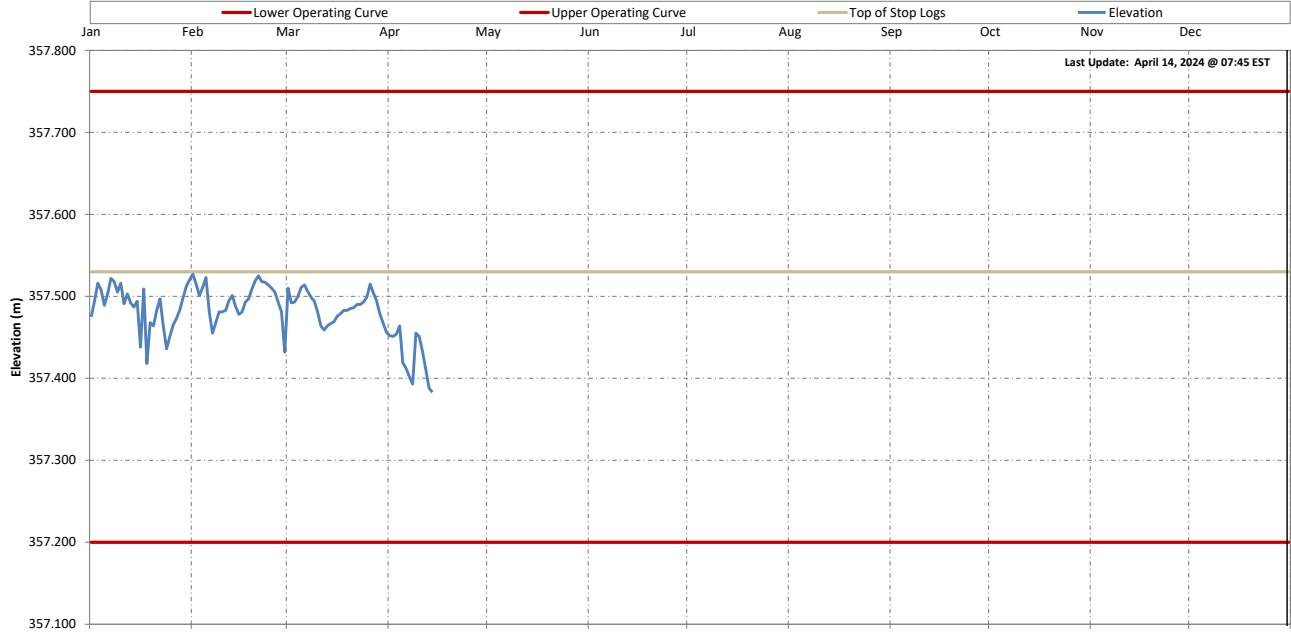
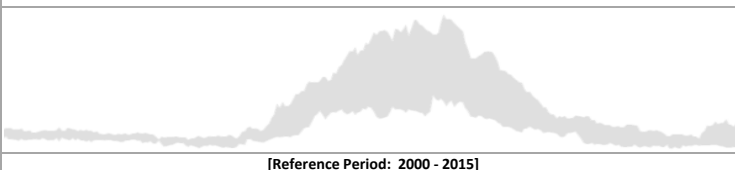


Sturgeon Falls Generating Station



25th to 75th Percentile Data



[Reference Period: 2000 - 2015]

Date	Elevation (m)	Inflow [5D] (m ³ /s)	Outflow [1D] (m ³ /s)
7-Apr-24	357.402	19.8	24.8
8-Apr-24	357.393	22.1	24.3
9-Apr-24	357.455	24.4	24.6
10-Apr-24	357.451	25.2	25.9
11-Apr-24	357.433	25.1	25.5
12-Apr-24	357.411	25.1	25.7
13-Apr-24	357.388	24.5	24.9

Provisional Data